


---

QUADRON®CrossLinkBreaker

---

Secures and disconnects currents  
up to 1600A

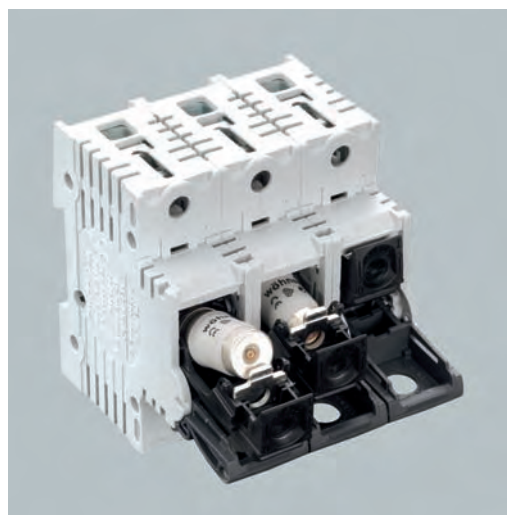
---

Sizes 000 to 2 can be mounted  
quickly on DIN EN 50 022 rails  
using the fixing set

---

### AMBUS®PowerSwitch

The new D0 fuse switch disconnectors combine the advantages of fuses with a high degree of safety and comfort for the operator. Fuses can only be changed when the power supply is disconnected. The fuse switch disconnecter is adjusted to the size of the fuse in the captive fuse carrier using a commercially available gauge ring. No screw cap is required. One comb-type busbar and one conductor or two conductors can be simultaneously connected in the large dual-function terminal up to 35mm<sup>2</sup>. An auxiliary switch for monitoring the switch position can be mounted on the side.




---

AMBUS®PowerSwitch

---

Fuse switch disconnecter for D0 fuses

---

Secure switching and easy to use

---

Variants for shipbuilding  
with GL certificate

---

### QUADRON®CrossLinkBreaker

Panel-mounting QUADRON®CrossLinkBreaker NH fuse switch disconnectors in sizes 000 to 4a for panel mounting are available for currents up to 1600A. Sizes 000 to 2 are suitable for DIN-rail mounting, sizes 00 to 3 are available in models with electronic and electro-mechanical fuse monitoring. A variety of connection options are available for connecting copper and aluminium conductors.

### CAPUS®EasyUse CAPUS®PowerFuse

Switch disconnecter with double-disconnecting contacts provide the operator with maximum security during switching. As emergency stop and main switch from 250A–800A. The models equipped with NH00 to NH3 fuses provide the switching function with additional protection from short circuit and overload. The extensive range of accessories enables copper or aluminium conductors to be connected.



QUADRON®CrossLinkSwitch

Switch disconnector with fuses

Safe, operator-independent switching by means of spring-controlled switch mechanism and double break

Version with door coupling twist handle and shaft extension for operation with closed door



QUADRON®CrossLinkSwitch

Switch disconnector

Safe, operator-independent switching by means of spring-controlled switch mechanism and double break

Version with door coupling twist handle and shaft extension for operation with closed door

**QUADRON®CrossLinkSwitch**

Switch disconnectors with spring-controlled switch mechanism for frequent switching as per utilisation category "A". With FLAG indicator to display switch position, can be locked in the off position with up to 3 padlocks. Can be used as a mains disconnector as per IEC/EN 60204-1 (main switch function). Can be fitted with an optional pilot switch for monitoring the switch position. Version with rotary drive for operation with a closed door can be combined with door coupling twist handle.

The highest level of safety is provided by the QUADRON® CrossLinkSwitch with NH fuses. The switch prevents accidental switching on when the lid is open – changing the NH fuses is therefore particularly simple and safe. In addition to the rotary drive version there are further types available with fuse monitoring.

Extensive connection accessories complete the product range.



31 307

31 314

31 315

## AMBUS® PowerSwitch

Switch disconnecter for D0 fuses up to 63A, dual function terminal on both sides

400V AC / 130V DC for 2-pole type

Shock protection complies with DIN EN 50274/BGV A3

**AMBUS® PowerSwitch**, D0 fuse switch disconnecter, **standard model**, without sleeve-type gauge ring of the fuse

Type	Rated current	Connection mm <sup>2</sup>	Pack size	Weight kg/100 units	Part no.	
1-pole	63A	1.5 – 35	3	14.0	31 307	03
1-pole + N	63A	1.5 – 35	2	26.2	31 308	03
2-pole	63A	1.5 – 35	2	27.8	31 313	03
3-pole	63A	1.5 – 35	1	42.0	31 314	03
3-pole + N	63A	1.5 – 35	1	54.0	31 315	03

**AMBUS® PowerSwitch**, D0 fuse switch disconnecter, **with LED**, without sleeve-type gauge ring of the fuse

1-pole	63A	1.5 – 35	3	14.2	31 556	03
3-pole	63A	1.5 – 35	1	42.6	31 557	03



31 902	31 316	31 014	31 012
--------	--------	--------	--------

## Accessories

for AMBUS®PowerSwitch

### Reducer

Type	Pack size	Weight kg/100 units	Part no.
for fuses D01 to 16A and special gauge rings	20	0.1	<b>31 902</b> 01

### Pilot switch, for monitoring the switch position, 9mm wide

1 N/O / 1 N/C: 400V AC / 2A; 24V DC / 6A	1	5.4	<b>31 316</b> 03
--	---	-----	------------------

### Comb-type busbar, pitch 27mm, length 1m

Type	Supply centre	Supply side	Cross section mm <sup>2</sup>	Pack size	Weight kg/100 units	Part no.
1-pole, insulated, bridge	130A	80A	16	25	19.0	<b>31 014</b> 06
1-pole, insulated, bridge	220A	130A	35	10	50.0	<b>31 057</b> 06
3-pole, insulated, bridge	130A	80A	16	10	56.2	<b>31 012</b> 06
3-pole, insulated, bridge	220A	130A	35	4	125.0	<b>31 056</b> 06

### End cap, for insulated comb-type busbars

for 3-pole comb-type busbars 16mm <sup>2</sup>	50	0.1	<b>31 027</b> 06
for 3-pole comb-type busbars 35mm <sup>2</sup>	10	0.2	<b>31 084</b> 06

### Connection terminal, for comb-type busbar as bridge version

for 1-pole comb-type busbars 16mm <sup>2</sup> , side connection up to 50mm <sup>2</sup>	25	2.5	<b>31 028</b> 07
for 3-pole comb-type busbars 16mm <sup>2</sup> , side connection up to 50mm <sup>2</sup>	25	2.9	<b>31 029</b> 07
for 3-pole comb-type busbars 16mm <sup>2</sup> , front connection up to 50mm <sup>2</sup>	25	2.9	<b>31 085</b> 07
for 1-pole comb-type busbars 35mm <sup>2</sup> , front connection up to 95mm <sup>2</sup>	3	9.0	<b>01 198</b> 07
for 3-pole comb-type busbars 35mm <sup>2</sup> , front connection up to 95mm <sup>2</sup>	3	9.3	<b>01 228</b> 07
a connecting terminal is needed for each phase			



- 33 552
- 33 910
- 33 545
- 33 542

## QUADRON® CrossLinkSwitch

**QUADRON® CrossLinkSwitch**, switch disconnector, 3-pole, **with multifunctional handle** (spring-controlled switch mechanism)

Type	Rated current	Width mm	Pack size	Weight kg/100 units	Part no.	
box terminal 70/95mm <sup>2</sup>	160A	106	1	203.0	33 542	14
connection screw M10*	320A	184	1	539.0	33 552	14

**QUADRON® CrossLinkSwitch**, switch disconnector, 3-pole, **for door coupling drive** (spring-controlled switch mechanism)

box terminal 70/95mm <sup>2</sup>	160A	106	1	203.0	33 545	14
connection screw M10*	320A	184	1	516.0	33 555	14
additional extension shaft and door coupling twist handle required						

## Accessories

for QUADRON® CrossLinkSwitch

Type	For use with	Pack size	Weight kg/100 units	Part no.	
cover for cable lug, can be clipped on top and bottom	QCS 320A	2	10.7	33 142	09
pilot switch for monitoring the switch position	QCS 160 A, 320A	1	1.3	33 908	14
auxiliary conductor connection	QCS 160	3	0.6	33 915	14
door coupling twist handle, black, IP 66, lockable in neutral position, with up to 3 U-locks, door locking can be activated, without extension shaft**	33 545 33 555	1	46.0	33 910	14
door coupling twist handle, red-yellow, IP 66, lockable in neutral position, with up to 3 U-locks, door locking can be activated, without extension shaft**		1	46.0	33 911	14
extension shaft 290mm long	QCS 160	1	13.0	33 912	14
extension shaft 490mm long		1	22.0	33 913	14
connection terminal 120mm <sup>2</sup>	QCS 160	3	8.8	33 914	14
box terminal for Cu conductors 35–150mm <sup>2</sup> s(r), s(s), f, f+AE, fl. Cu	QCS 320	3	10.0	33 909	09
clamp connector for Cu conductors 70–150mm <sup>2</sup> s(r), f+AE / 18 x 2–14		1	6.3	33 163	09
wedge clamp terminal, single, for Cu and Al* conductors 35–150mm <sup>2</sup> rm, sm, f, f+AE		1	11.6	33 166	09
wedge clamp terminal, double, for Cu conductors, s(r), s(s), f+AE, 2 x 35–70mm <sup>2</sup>		1	16.6	33 145	09

terminal power rating, see page 8/30

\* not maintenance-free when aluminium conductors are used (see page 8/2)

\*\* switch can also be installed at a 90° angle to the left/right, with the handle in the same position



33 512
33 911
33 505
33 502

## QUADRON® CrossLinkSwitch

**QUADRON® CrossLinkSwitch NH**, switch disconnecter with fuses, 3-pole,,  
with multifunctional handle (spring-controlled switch mechanism)

Type	Rated current	Size	Width mm	Pack size	Weight kg/100 units	Part no.	
box terminal	125A	00	106	1	208.0	33 502	15
connection screw M10	250A	1	184	1	540.0	33 512	15
fuse monitoring on request							

**QUADRON® CrossLinkSwitch NH**, switch disconnecter, 3-pole, for door coupling drive (spring-controlled switch mechanism)

box terminal	125A	00	106	1	201.6	33 505	15
connection screw M10	250A	1	184	1	528.0	33 515	15
additional extension shaft and door coupling twist handle required							

Fuses are not included in delivery.

## Accessories

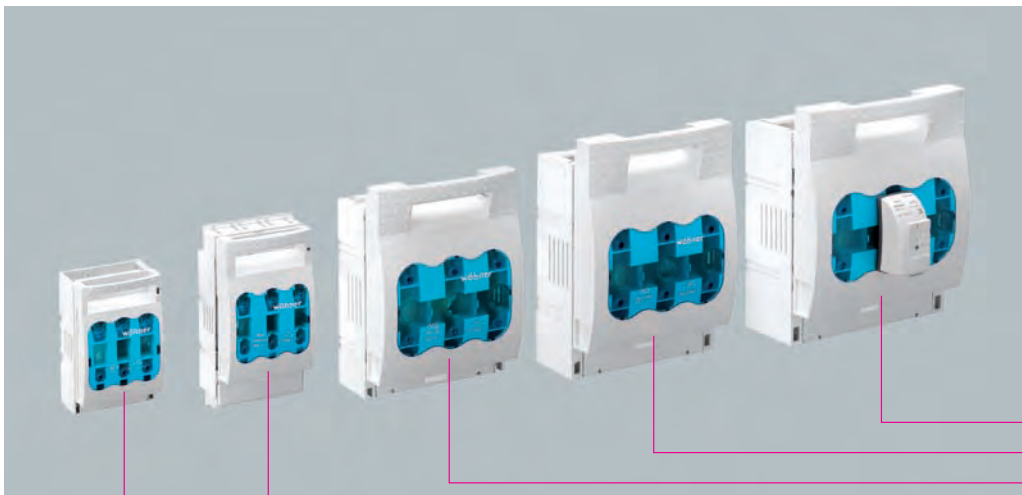
for QUADRON® CrossLinkSwitch

Type	For use with	Pack size	Weight kg/100 units	Part no.	
cover for cable lug, can be clipped on top and bottom	QCS-NH 1	2	10.7	33 142	09
pilot switch for monitoring the switch position	QCS-NH 00, QCS-NH 1	1	1.3	33 908	14
auxiliary conductor connection	QCS-NH 00	3	0.6	33 915	14
door coupling twist handle, black, IP 66, lockable in neutral position, with up to 3 U-locks, door locking can be activated, without extension shaft**	33 505 33 515	1	46.0	33 910	14
door coupling twist handle, red-yellow, IP 66, lockable in neutral position, with up to 3 U-locks, door locking can be activated, without extension shaft**		1	46.0	33 911	14
extension shaft 290mm long		1	13.0	33 912	14
extension shaft 490mm long		1	22.0	33 913	14
connection terminal 120mm <sup>2</sup>	QCS-NH 00	3	8.8	33 914	14
box terminal for Cu conductors 35–150mm <sup>2</sup> s(r), s(s), f, f+AE, fl. Cu	QCS-NH 1	3	10.0	33 909	09
clamp connector for Cu conductors 70–150mm <sup>2</sup> s(r), f+AE / 18 x 2–14		1	6.3	33 163	09
wedge clamp terminal, single, for Cu and Al* conductors 35–150mm <sup>2</sup> rm, sm, f, f+AE		1	11.6	33 166	09
wedge clamp terminal, double, for Cu conductors, s(r), s(s), f+AE, 2 x 35–70mm <sup>2</sup>		1	16.6	33 145	09

\* not maintenance-free when aluminium conductors are used (see page 8/2)

\*\* switch can also be installed at a 90° angle to the left/right, with the handle in the same position

	Accessories	7 11,12	→
	Technical data	8 28,29	→
New	Dimensions	9 37,38	→



33 332
33 202
33 201
33 199
33 217

## QUADRON® CrossLinkBreaker

NH fuse switch disconnectors for panel mounting

### QUADRON® CrossLinkBreaker size 000 to 3, NH fuse switch disconnecter

Type	Rated current	Size mm <sup>2</sup>	Pack size	Weight kg/100 units	Part no.	
box terminal	125A	000	1	57.2	33 217	09
clamp	160A	00	1	78.0	33 199	09
screw M8	160A	00	1	77.7	33 200	09
box terminal	250A	1	1	191.0	33 393	09
screw M10	250A	1	1	171.0	33 201	09
screw M10	400A	2	1	362.0	33 202	09
screw M12	630A	3	1	490.0	33 203	09

### QUADRON® VolBreaker size 4a, NH fuse switch disconnecter

2 x screw M12	1600A	4 a	1	1534.0	33 204	09
---------------	-------	-----	---	--------	--------	----

### QUADRON® CrossLinkBreaker size 00, NH fuse switch disconnecter, short shock protection

clamp 70mm <sup>2</sup>	160A	00	1	71.6	33 221	09
screw M8	160A	00	1	71.9	33 222	09

### QUADRON® CrossLinkBreaker sizes 00 to 3, NH fuse switch disconnecter, with electronic fuse monitoring

clamp 70mm <sup>2</sup>	160A	00	1	93.0	33 328	09
screw M8	160A	00	1	92.0	33 329	09
screw M10	250A	1	1	229.0	33 330	09
screw M10	400A	2	1	380.0	33 331	09
screw M12	630A	3	1	524.0	33 332	09

### QUADRON® CrossLinkBreaker sizes 00 to 3, NH fuse switch disconnecter, with electromechanical fuse monitoring

clamp 70mm <sup>2</sup>	160A	00	1	127.0	33 207	09
screw M8	160A	00	1	126.0	33 208	09
screw M10	250A	1	1	255.0	33 149	09
screw M10	400A	2	1	412.0	33 150	09
screw M12	630A	3	1	556.0	33 151	09

circuit diagram for fuse monitoring on page 9/36



33 376	33 378	33 166	33 145	33 156
--------	--------	--------	--------	--------

## Accessories

for QUADRON® CrossLinkBreaker, NH fuse switch disconnectors

### Comb-type busbar, insulated, with end caps

Type	Cross section mm <sup>2</sup>	Can be used with	Pack size	Weight kg/100 units	Part no.
for two NH-LTS	35	33 217	4	23.0	<b>33 906</b> 09
for two NH-LTS	35	33 200	4	27.1	<b>33 376</b> 09
for three NH-LTS	35	33 200	4	44.7	<b>33 377</b> 09
for four NH-LTS	35	33 200	4	62.3	<b>33 392</b> 09

### Connection terminal, for comb-type busbar

Type	Connection mm <sup>2</sup>	Can be used with	Pack size	Weight kg/100 units	Part no.
3-pole comb-type busbars 35mm <sup>2</sup>	4–35	33 217	3	4.0	<b>33 907</b> 09
3-pole comb-type busbars 35mm <sup>2</sup>	25–95	33 200	3	12.1	<b>33 378</b> 09

### Connection accessories

clamp connector for Cu conductors, s(r), f + AE, fl. Cu	1.5 – 70 / 12 x 1 – 10	00	3	1.5	<b>03 727</b> 09
	70 – 150 / 18 x 2 – 14	1	1	6.3	<b>33 163</b> 09
	120 – 240 / 21 x 1 – 14	2	1	10.6	<b>33 164</b> 09
	150 – 300 / 25 x 1 – 23	3	1	12.5	<b>33 165</b> 09
M8 screw connector	70	00	3	1.4	<b>30 894</b> 09
wedge clamp terminal, single, for Cu and Al* conductors, s(r), s(s), f + AE	16 – 70	00	3	3.0	<b>33 224</b> 09
box terminal for Cu conductors	70 – 185mm <sup>2</sup> f, 35 – 150mm <sup>2</sup> rm, Cu 35 – 120mm <sup>2</sup> f + AE, la. Cu 15.5 – 24mm wide	1	3	10.0	<b>33 909</b> 09
wedge clamp terminal, single, for Cu and Al* conductors, s(r), s(s), f, f + AE	70 – 150	1	1	11.6	<b>33 166</b> 09
	50 – 150 / 120 – 240	2	1	19.9	<b>33 167</b> 09
	150 – 300	3	1	24.7	<b>33 168</b> 09
wedge clamp terminal, double, for Cu conductors, s(r), s(s), f + AE	2 x 35 – 70	1	1	16.6	<b>33 145</b> 09
	2 x 70 – 120	2	1	27.8	<b>33 146</b> 09
	2 x 150	3	1	36.8	<b>33 147</b> 09
	2 x 185	3	1	36.8	<b>33 385</b> 09
tunnel terminal for screw M8	3 x 1.5 – 16	00	3	6.4	<b>01 182</b> 09

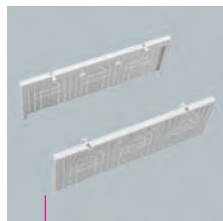
\* not maintenance-free when aluminium conductors are used (see page 8/2)

### Pilot switch, for monitoring disconnector lid position

1 changeover switch 250V AC / 5A; 30V DC / 4A	000 – 3	1	1.1	<b>33 156</b> 09
1 changeover switch 250V AC / 5A; 30V DC / 4A	1	1	1.3	<b>33 917</b> 09
flat push-on connector DIN 46 244-A, 2.8 x 0.5mm				

### Disconnecter lid interlock, to seal the disconnector

for sealing wire	000	10	0.1	<b>33 051</b> 09
	00	10	0.2	<b>03 849</b> 09
for 3 padlocks with hasp diameter 4 – 7mm / sealing wire	1 – 3	10	0.5	<b>33 157</b> 09



33 142	33 418	33 155	33 154
--------	--------	--------	--------

## Accessories

for QUADRON® CrossLinkBreaker, NH fuse switch disconnectors

### Rapid mounting set, for mounting rails DIN EN 50 022 (35 x 7.5mm)

Type	Size	Pack size	Weight kg/100 units.	Part no.
for 1 mounting rail	000	1	0.6	<b>33 247</b> 09
for 2 mounting rails, with centre distance 125mm or 150mm	00	1	18.5	<b>33 193</b> 09
	1 – 2	1	51.0	<b>33 158</b> 09

### Arc chamber

retrofit package for higher utilisation category**	1	3	10.7	<b>33 918</b> 09
--	---	---	------	------------------

### Cover, for cable lug, can be clipped on top and bottom

not for 33 221, 33 222, for extra-long cable lug	00	1	2.8	<b>79 811</b> 09
for 33 221, 33 222	00	2	4.8	<b>33 223</b> 09
for all types	1	2	10.7	<b>33 142</b> 09
	2	2	10.9	<b>33 143</b> 09
	3	2	15.6	<b>33 144</b> 09

### Cover, for connection area

can be clipped on top or bottom	2	2	4.3	<b>33 418</b> 09
	3 max. 600A	2	5.6	<b>33 419</b> 09

### Barrier for handle

to close off handle area from rear	1 – 3	10	2.2	<b>33 155</b> 09
------------------------------------	-------	----	-----	------------------

### Trim frame, for cover with front plate assembly

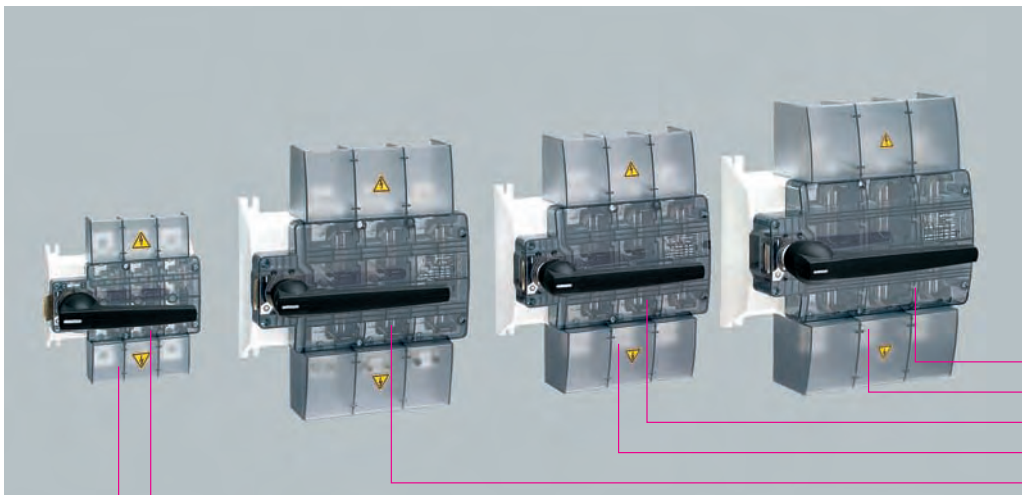
Type	W x L	Size	Pack size	Weight kg/100 units	Part no.
single	130 x 210	000	10	3.1	<b>33 219</b> 09
double	200 x 210	000	10	3.9	<b>33 220</b> 09
single	130 x 210	00	10	1.9	<b>78 893</b> 09
double	232 x 210	00	10	2.9	<b>78 105</b> 09
triple	340 x 210	00	10	3.8	<b>78 139</b> 09
single*	143 x 210	00	10	3.3	<b>33 225</b> 09
double*	232 x 210	00	10	5.6	<b>33 226</b> 09
single with blank*	232 x 210	00	10	6.4	<b>33 227</b> 09
single	215 x 330	1	1	11.7	<b>33 152</b> 09
single	248 x 330	2	1	9.4	<b>33 153</b> 09
single	290 x 330	3	1	13.2	<b>33 154</b> 09

\* for 33 221, 33 222

### Label

clip, 30 x 10mm	1 – 3	100	0.1	<b>33 159</b> 09
-----------------	-------	-----	-----	------------------

\*\* Delivery date on request



- 33 336
- 33 352
- 33 335
- 33 351
- 33 334
- 33 333
- 33 350

## CAPUS® EasyUse

### CAPUS® EasyUse, switch disconnectors, 3-pole switching, 500V AC

Type	Rated current	Pack size	Weight kg/100 units	Part no.	
LTS, screw M10, graphite-grey handle	250A	1	194.0	33 333	14
LTS, screw M10, graphite-grey handle	400A	1	538.0	33 334	14
LTS, screw M10, graphite-grey handle	630A	1	546.0	33 335	14
LTS, screw M12, graphite-grey handle	800A	1	944.0	33 336	14
LTS, screw M10, red handle	250A	1	194.0	33 355	14
LTS, screw M10, red handle	400A	1	546.0	33 356	14
LTS, screw M10, red handle	630A	1	544.0	33 357	14
LTS, screw M12, red handle	800A	1	940.0	33 358	14

## Accessories

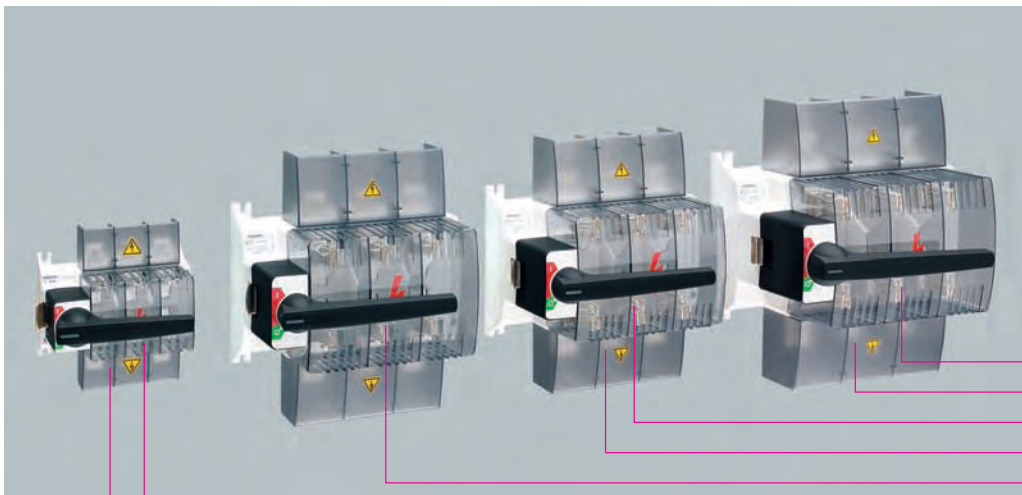
for CAPUS® EasyUse

### Terminal cover, attachable on top or bottom

Size	Pack size	Weight kg/100 units	Part no.	
LTS 250, LTS F 160	2	4.0	33 350	14
LTS 400/630, LTS F 250/400	2	12.0	33 351	14
LTS 800, LTS F 630	2	20.0	33 352	14

### Pilot switch, for monitoring the switch position

1 NO / 1 NC; 6.3 x 0.8 plug connections	1	2.5	33 347	14
---	---	-----	--------	----



- 33 340
- 33 352
- 33 339
- 33 351
- 33 338
- 33 337
- 33 350

## CAPUS® PowerFuse

### CAPUS® PowerFuse, switch disconnecter with fuses\*, 3-pole switching

Type	Rated current	Size	Pack size	Weight kg/100 units	Part no.	
LTS F, screw M8, graphite-grey handle	160A	00	1	230.0	33 337	15
LTS F, screw M10, graphite-grey handle	250A	1	1	726.0	33 338	15
LTS F, screw M10, graphite-grey handle	400A	2	1	760.0	33 339	15
LTS F, screw M12, graphite-grey handle	630A	3	1	1310.0	33 340	15
LTS F, screw M8, red handle	160A	00	1	230.0	33 359	15
LTS F, screw M10, red handle	250A	1	1	724.0	33 360	15
LTS F, screw M10, red handle	400A	2	1	768.0	33 361	15
LTS F, screw M12, red handle	630A	3	1	1280.0	33 362	15

\* Fuses are not included in delivery.

## Accessories

for CAPUS® PowerFuse

### Terminal cover, attachable on top or on bottom

Size	Pack size	Weight kg/100 units	Part no.	
LTS 250, LTS F 160	2	4.0	33 350	14
LTS 400/630, LTS F 250/400	2	12.0	33 351	14
LTS 800, LTS F 630	2	20.0	33 352	14

### Pilot switch, for monitoring the switch position

1 NO / 1 NC; 6.3 x 0.8 plug connections	1	2.5	33 347	14
---	---	-----	--------	----



33 342	33 346	33 348	33 246
--------	--------	--------	--------

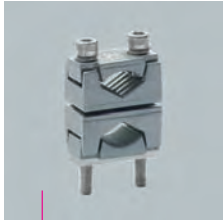
## Accessories

for CAPUS® EasyUse, switch disconnectors, 3-pole switching

for CAPUS® PowerFuse, switch disconnectors, 3-pole switching

### Door coupling drive

Type	Size	Pack size	Weight kg/100 units	Part no.	
graphite-grey cover, incl. assembly accessories	LTS 250/400/630 LTS F 160/250/400	1	23.5	<b>33 342</b>	14
	LTS 800 LTS F 630	1	44.0	<b>33 343</b>	14
graphite-grey cover, door interlocked, lockable with padlock, incl. assembly accessories	LTS 250/400/630 LTS F 160/250/400	1	38.0	<b>33 345</b>	14
	LTS 800 LTS F 630	1	67.0	<b>33 346</b>	14
yellow cover, door interlocked, lockable with padlock, incl. assembly accessories	LTS 250/400/630 LTS F 160/250/400	1	38.0	<b>33 348</b>	14
	LTS 800 LTS F 630	1	56.0	<b>33 349</b>	14
extension shaft 300mm long	LTS 250/400/630 LTS F 160/250/400	1	30.0	<b>33 246</b>	14
	LTS 800 LTS F 630	1	57.3	<b>33 283</b>	14
extension shaft 550mm long	LTS 250/400/630 LTS F 160/250/400	1	29.0	<b>33 380</b>	14
	LTS 800 LTS F 630	1	38.0	<b>33 381</b>	14



33 371

33 365

## Accessories

for CAPUS® EasyUse, switch disconnectors, 3-pole switching

for CAPUS® PowerFuse, switch disconnectors, 3-pole switching

### Connections accessories

Type	Size	Connection mm <sup>2</sup>	Pack size	Weight kg/100 units	Part no.	
clamp connector for Cu conductors, s(r), f+AE; fl. Cu	LTS F 160	2.5 – 70 / 12 x 10	3	2.9	<b>33 363</b>	14
clamp connector for fl. Cu	LTS 250	14 x 9	3	3.5	<b>33 364</b>	14
	LTS F 250, LTS 400	18 x 10	1	6.3	<b>33 163</b>	09
	LTS F 400, LTS 630	21 x 13	1	10.6	<b>33 164</b>	09
	LTS F 630, LTS 800	25 x 13	1	12.5	<b>33 165</b>	09
wedge clamp terminal, single, for Cu-Al* conductors, s(r), s(s), f, f+AE	LTS 250	70 – 120	3	6.7	<b>33 365</b>	14
	LTS F 250, LTS 400	70 – 150	3	11.6	<b>33 366</b>	14
	LTS F 400, LTS 630	120 – 240	3	20.0	<b>33 367</b>	14
	LTS F 630, LTS 800	150 – 300	3	25.0	<b>33 368</b>	14
wedge clamp terminal, double, for Cu conductors, s(r), s(s), f+AE	LTS F 250, LTS 400	2 x 70 – 120	3	20.4	<b>33 369</b>	14
	LTS F 400, LTS 630	2 x 120 – 185	3	34.0	<b>33 370</b>	14
	LTS F 630, LTS 800	2 x 150 – 240	3	44.3	<b>33 371</b>	14
* not maintenance-free when aluminium conductors are used (see page 8/2)						

	Technical data	8 35,36	→
--	----------------	---------	---

Wohner\_Switch\_disconnectors\_en\_1211.pdf

**KLINKMANN**

www.klinkmann.com

**Helsinki**  
tel. +358 9 540 4940  
automation@klinkmann.fi

**Yekaterinburg**  
tel. +7 343 376 5393  
yekaterinburg@klinkmann.spb.ru

**Riga**  
tel. +371 6738 1617  
klinkmann@klinkmann.lv

**Vilnius**  
tel. +370 5 215 1646  
post@klinkmann.lt

**St. Petersburg**  
tel. +7 812 327 3752  
klinkmann@klinkmann.spb.ru

**Samara**  
tel. +7 846 273 95 85  
samara@klinkmann.spb.ru

**Tallinn**  
tel. +372 668 4500  
klinkmann.est@klinkmann.ee

**Moscow**  
tel. +7 495 641 1616  
moscow@klinkmann.spb.ru

**Kiev**  
tel. +38 044 495 33 40  
klinkmann@klinkmann.kiev.ua

**Minsk**  
tel. +375 17 200 0876  
minsk@klinkmann.com